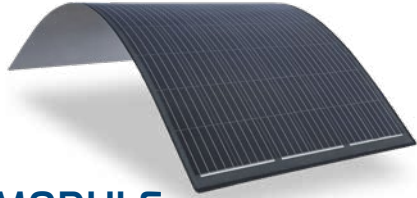


DAS ENERGY REFERENCE PROJECTS

INNOVATIVE SOLAR SOLUTIONS MADE IN AUSTRIA



INDUSTRIAL ROOFING



11x6M MODULE

The 11x6M project module was specially designed for large photovoltaic projects. The weight advantage (only 3.3 kg/m²) enables easy handling during installation and the gluing technology considerably reduces the installation time. Large industrial roofs are quickly and easily converted into energy roofs. The 11x6M project module is equipped with 66 monocrystalline silicon cells and an output of 330 Wp. The junction box can be mounted either on the back or on the front, but is generally located in the centre of the PV module. With the lightweight and flexible 11x6M project module for gluing, DAS Energy offers the perfect mix of economy, power output and handling.



12x2M MODULE

The 12x2M project module was specially developed for roof-integrated PV solutions such as standing seam roof systems (e.g. Kalzip AluPlusSolar). The modules are equipped with 24 monocrystalline cells and 120 Wp. During installation, the modules are glued to the roof profiles between the metal seams. In this way, large industrial roofs and facades can be transformed into large solar power plants. This DAS Energy project module is also quick and easy to install thanks to its weight advantage (only 3.3 kg/m²) and the innovative adhesive system.

TYPES OF INDUSTRIAL ROOFS



METAL ROOF



BITUMEN ROOF



MEMBRANE ROOF

BUILDING INTEGRATED PHOTOVOLTAICS FOR A GREEN CITY



INDUSTRIAL ROOF



BITUMEN





MEMBRANE






METAL





VÖSLAUER MINERALWASSER AG Bad Vöslau | AUT




	Installed capacity	297 kWp
	Modules installed	974 pcs.

	Module type	10x6P FJB 12x6P FJB
	Type of roof	Flat roof
	Mounting system	direct bonding



QUESTER BAUSTOFFHANDEL GMBH Vienna | AUT

	Installed capacity	125 kWp
	Modules installed	499 pcs.

	Module type	10x6P FJB
	Type of roof	Flat roof
	Mounting system	direct bonding


BITUMEN

MEMBRANE

METAL

WIENER LINIEN SUBWAY - OTTAKRING Vienna | AUT

Installed capacity

61 kWp


Modules installed

180 pcs.


Module type

12x6M FJB


Type of roof

Flat roof


Mounting system

direct bonding


KUGELTANZ IM PRATER Vienna | AUT

Installed capacity

200 kWp


Modules installed

605 pcs.


Module type

11x6M FJB


Type of roof

Flat roof


Mounting system

direct bonding

INDUSTRIAL ROOF



BITUMEN



MEMBRANE



METAL



AUSTRO ENGINE GMBH Wiener Neustadt | AUT



Installed capacity

1,2 MWp



Modules installed

4800 pcs.



Module type

10x6P FJB



Type of roof

Flat roof



Mounting system

direct bonding



INTERQUELL GMBH Wheringen | GER



Installed capacity

265 kWp



Modules installed

802 pcs.



Module type

11x6 FJB



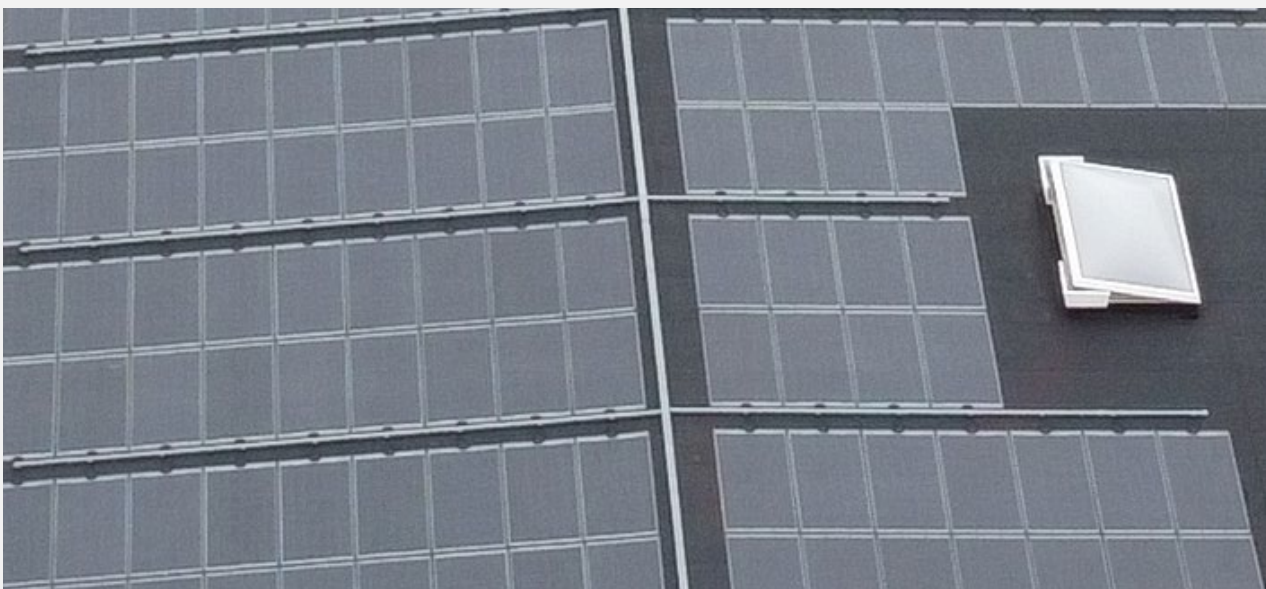
Type of roof

Flat roof








Mounting system

direct bonding



KLINGELE GMBH Hilpoltstein | GER

	Installed capacity	445 kWp
	Modules installed	1777 pcs.

	Module type	11x6M
	Type of roof	Flat roof
	Mounting system	direct bonding

INDUSTRIAL ROOF



BITUMEN



MEMBRANE



METAL



TRUMPF GMBH Ditzingen | GER



Installed capacity

1,2 MW



Modules installed

10.000 pcs.



Module type

12x2M RJB



Type of roof

Metal roof



Mounting system

direct bonding



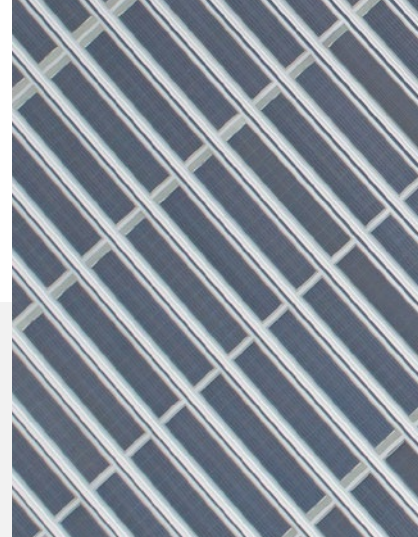
BITUMEN



MEMBRANE



METAL



METALINE SURFACE PROTECTION GMBH

Hildrizhausen | GER



Installed capacity

65 kWp



Modules installed

588 pcs.



Module type

12x2M RJB



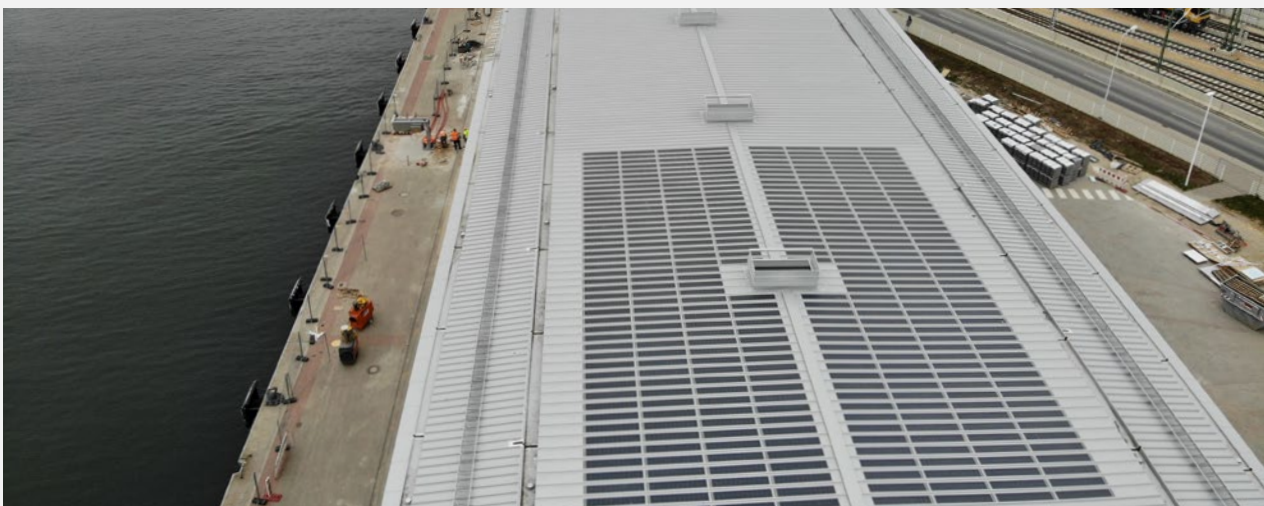
Type of roof

Metal roof



Mounting system

direct bonding



ROSTOCK HAFEN Rostock | GER



Installed capacity

297 kWp



Modules installed

974 pcs.



Module type

12x2M RJB 110 Wp



Type of roof

Flat roof



Mounting system

direct bonding

INDUSTRIAL ROOF



BITUMEN



MEMBRANE



METAL



KHK KRAKÓW Krakau | POL



Installed capacity

17,5 kWp



Modules installed

152 pcs.



Module type

12x2M FJB



Type of roof

Metal facade



Mounting system

direct bonding



BITUMEN



MEMBRANE



METAL



BEZIRKSHAUPTMANNSCHAFT Bruck a.d. Leitha | AUT



Installed capacity

47 kWp



Modules installed

311 pcs.



Module type

12x3P FJB



Type of roof

Aluminium roof



Mounting system

direct bonding

INDUSTRIAL ROOF



BITUMEN



MEMBRANE



METAL



ALTBAU ENSEMBLE Vienna | AUT



Installed capacity

10 kWp



Modules installed

78 pcs.



Module type

12x2M FJB | 9x2M FJB



Type of roof

Stehfalzdach



Mounting system

direct bonding



MA 48 MUNICIPAL DEPARTMENT FOR WASTE MANAGEMENT, STREET CLEANING

AND VEHICLE FLEET Vienna | AUT



Installed capacity

170 kWp



Modules installed

996 pcs.



Module type

3x12M FJB



Type of roof

Bogendach



Mounting system

direct bonding



BITUMEN



MEMBRANE



METAL



NEUE BANK AG

Vaduz | LIE



Installed capacity

39 kWp



Modules installed

342 pcs.



Module type

12x2M FJB



Type of roof

Metal roof



Mounting system

direct bonding



ALBERT-LUDWIGS UNIVERSITÄT

FREIBURG

Freiburg | GER



Installed capacity

54 kWp



Modules installed

446 pcs.



Module type

12x2M 120 Wp



Type of roof

Stehfalzdach



Mounting system

direct bonding

STADIUM








EISSPORTARENA Spittal | GER

	Installed capacity	320 kWp		Module type	11x6M FJB
	Modules installed	968 pcs.		Type of roof	Gable roof
				Mounting system	direct bonding






ARENA NOVA Wiener Neustadt | AUT

	Installed capacity	297 kWp		Module type	12x2M RJB 110 Wp
	Modules installed	974 pcs.		Type of roof	Bitumendach
				Mounting system	direct bonding


AFAS SOFTWARE Leusden | NLD

	Installed capacity	400 kWp
	Modules installed	1147 pcs.

	Module type	12x6M FJB
	Type of roof	Stadium roof
	Mounting system	direct bonding

PV FACADE








STAR MOVIE WELS Wels | AUT

	Installed capacity	30 kWp		Module type	11x6M
	Modules installed	90 pcs.		Type of roof	Corrugated iron facade
				Mounting system	direct bonding









DAS ENERGY WESTFASSADE Wiener Neustadt | AUT

	Installed capacity	68 kWp		Module type	12x6P FJB
	Modules installed	222 pcs.		Type of roof	Facade
				Mounting system	direct bonding





DAS ENERGY HEADQUARTER Wiener Neustadt | AUT




	Installed capacity	21 kWp		Module type	12x6M RJB
	Modules installed	60 pcs.		Type of roof	Facade
				Mounting system	direct bonding

NOISE BARRIER



PILOTPROJEKT ASFINAG S1 Vienna | AUT

	Installed capacity	4,8 kWp
	Modules installed	19 pcs.

	Module type	10x6M FJB
	Type of roof	Noise barrier
	Mounting system	direct bonding








PILOT PROJECT LAND NIEDERÖSTERREICH

Wiener Neustadt | AUT

	Installed capacity	54 kWp		Module type	12x2M 120 Wp
				Type of roof	Stehfalzdach
	Modules installed	446 pcs.		Mounting system	direct bonding



LAND NIEDERÖSTERREICH Himberg | AUT

	Installed capacity	20 kWp		Module type	11x6M FJB 330Wp
	Modules installed	60 pcs.		Type of roof	Noise barrier
				Mounting system	direct bonding

AGRI-PV APPLICATIONS

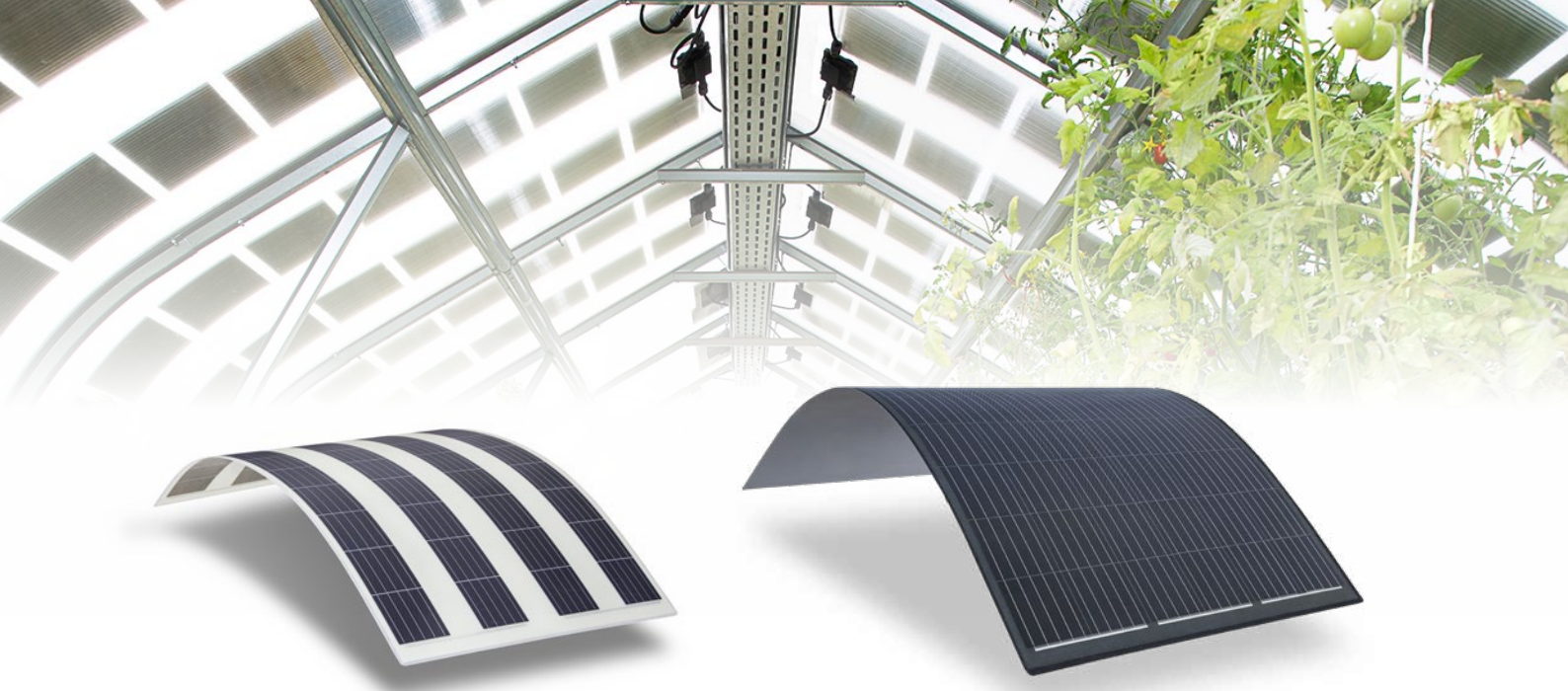


SOLAR SOLUTION FOR GREENHOUSES

Light, flexible & semi-transparent

Agri photovoltaic modules are specially designed for applications where sunlight inside the building is an essential factor. Greenhouses offer the best example. The plants cultivated in them need heat – generated by the greenhouse effect – and sunlight,

in order to grow. In summer, however, it can quickly become too hot in a greenhouse, especially in southern regions. DAS Energy offers the perfect solution for this problem – a light and semi-transparent solar panel – that provides shade and generates electricity.



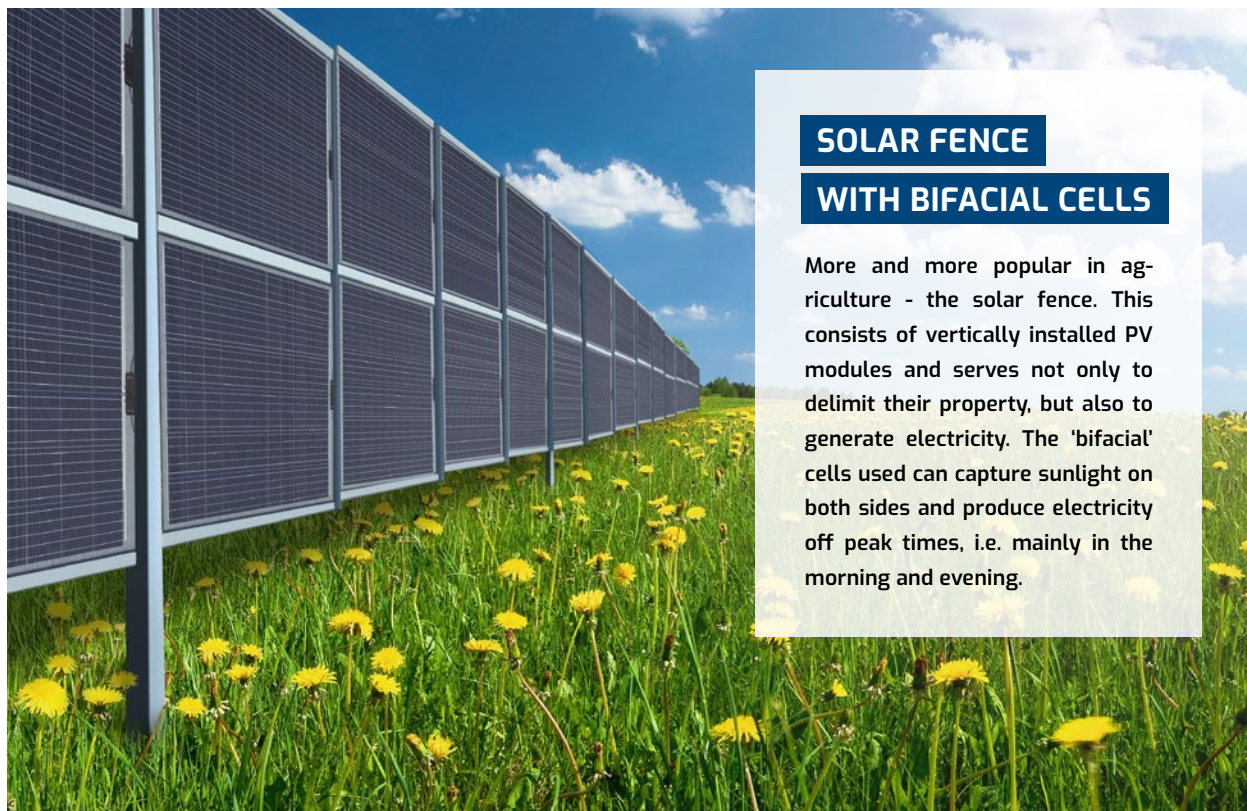
GREENHOUSE PV MODULE

Semi-transparent and light PV module provide enough diffuse light for plants in greenhouses to grow and protect the plants from too much heat in summer. The sustainable energy produced on the roof can be used for charging electronic systems such as ventilation, irrigation and lighting.

COMPOSITE SUPER LIGHT

PV MODULE 11x6 M

The 11x6M Composite super light PV module enables almost limitless applications - e.g. on greenhouses or in the form of a solar fence - due to its low weight and simple bonding technology.



SOLAR FENCE

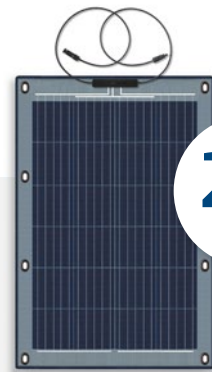
WITH BIFACIAL CELLS

More and more popular in agriculture - the solar fence. This consists of vertically installed PV modules and serves not only to delimit their property, but also to generate electricity. The 'bifacial' cells used can capture sunlight on both sides and produce electricity off peak times, i.e. mainly in the morning and evening.

BALCONY POWER PLANT

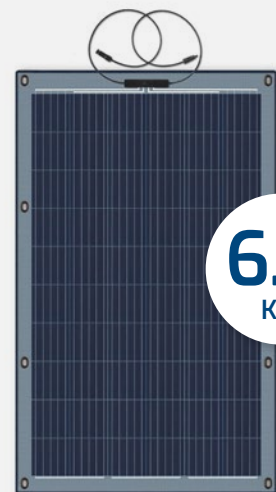
Available
at our partner
DAS Kraftwerk by
summer 2023

www.daskraftwerk-energy.com



2.7
KG

6 x 4M 120 WP



6.0
KG

10 x 6M 300 WP

**Permit-free and expandable mini Solar systems for the balcony -
direct connection to a Schuko socket with up to 800 Watt feed-in.**

- Balcony power plants in various sizes available online from our partner DAS Kraftwerk www.daskraftwerk-energy.com
- Easy assembly and connection
- Extension possible - up to 6 PV modules of 150 Wp each or 4 PV modules of 200 Wp each
- A production of up to 800,000 kilowatt hours per year
- Mobile power plant can also be used outdoors (camping, yachts, boats)
- Various mounting options included or available in the webshop

MOBILE PV APPLICATIONS



GOLF CART PV MODULE

Self-sufficient on the golf course

Especially for golf carts DAS Energy has developed a perfect PV solution that can be mounted on almost all golf cart types used on the market. The light, thin, flexible and at the same time robust construction of the PV module allows roof mounting with minimal effort. The PV roof extends the range by up to 15% and increases the battery life by up to 2 years compared to a conventional golf cart.

References: GC Fontana, Niederösterreich, AUT | GC Alcanada, Port d'Alcúdia, Balearic Islands, ESP



MOBILE PV APPLICATIONS

Available
at our partner
DAS Kraftwerk by
summer 2023

www.daskraftwerk-energy.com



PV FOR BOATS AND YACHTS

Energy independent on board

The PV modules from DAS Energy are specially designed for the weather conditions at sea. They guarantee permanently high energy generation even for locations with high salt and ammonia gas concentrations. Already in 2016, DAS Energy received the double standard salt fog/corrosion certificate according to IEC 61701 (severity level 6) from TÜV Nord. The minimized wind attack surface of the modules offers another advantage for windy coastal regions: since the solar modules are directly bonded to the surface during installation, they do not offer any wind attack surface.

OUR PARTNER

Numarine Denizcilik | TUR
www.numarine.com





MOBILE PV SOLUTIONS FOR VEHICLES

Motorhomes & Campers

The use of solar energy in boats, tents, containers, golf carts and other vehicles is a great challenge. DAS Energy combines aesthetics and functionality: size, shape and color of the modules can be adapted to almost all contours and surfaces.



SPECIAL PV APPLICATIONS



ENERGIE BURGENLAND Burgenland | AUT



Installed capacity

10 kWp



Modules installed

30 pcs.



Module type

11x6M FJB



Type of roof

Wind tower wall



Mounting system

direct bonding



PV SYSTEMS FOR TENTS

- Energetically self-sufficient, temporary tent unit, which is powered exclusively by solar energy
- Keder rails enable fast assembly and dismantling of the PV system on large tent areas
- Ecological power generation for large tents (such as civil defense, Red Cross, events, etc.)
- Energy storage in different sizes: Power: 35 kWp - 150 kWp, storage capacity: 60 kWh - 480 kWh.

FOR MORE INFORMATION



www.das-energy.com



download datasheets



DAS Energy Ltd.
Branch Austria

Ferdinand Graf von Zeppelin Straße 18
2700 Wiener Neustadt, Austria