

# INNOV



# SHAPES

# ATION



## ABOUT US

---

DAS Energy GmbH, with its headquarters in Wiener Neustadt (Austria), is a research & development center and a production facility with a capacity of 55 MW per year. As a Green Tech company, our aim is to set new standards as a worldwide pioneer in patented photovoltaic technology: glass-free, frameless, flexible, ultra-lightweight, easy to mount, suitable for extreme weather conditions, reliable and long-lasting.

Our mission is to drive the world's transition to green energy by developing and building the most innovative products in the photovoltaic sector.

Our vision is to bring energy wherever it's needed by fulfilling the need for tomorrow's energy supply and to open new dimensions for integrated PV solutions for architecture. That's our commitment.

# THE WORLD

# IMAGINE BEN THE RUL



## ULTRA-LIGHTWEIGHT

Module weight only  
3.3 kg / m<sup>2</sup>.



## EASY TO INSTALL

Simple but strong glue fixing  
No metal subsystem required  
No ballast required.



## PATENTED DESIGN

The sustainable technology behind our modules sets new standards and guarantees high-quality products with extraordinary performance and a durable life span.



## FLEXIBILITY / BENDABLE

The flexibility ensures that DAS Energy modules easily adjust to the shape of the substructure. Smallest bending diameter (2 m).



## HIGH-EFFICIENCY

Silicon cell technology  
Monocrystalline cells  
No thin film!

# DING ES

## OUR PRODUCTS

DAS Energy combines fibreglass materials from aircraft construction with crystalline silicon solar cells. Due to this unique development, DAS Energy's advanced technology bends the rules by combining the advantages of both conventional and thin-film technologies. With this advanced innovation we have created a high-quality product which provides high energy yield, on one side, and still stays light and flexible, on the other side. Thanks to their flexibility, the DAS Energy modules easily conform to the substructure with a module weight as low as  $3.3 \text{ kg} / \text{m}^2$ . Therefore, our modules are suitable for all roof types such as waterproofing membrane, metal sheet roofs and many more. The installation is very easy because DAS Energy modules can be glued, screwed, riveted, or mounted onto the substructure using magnets or eyelets.



### HIGHER ENERGY YIELD

Our anti-reflective, dirt-resistant and light-catching surface ensures the maximum electrical yield of our modules. By constantly improving the characteristics of our surface structure we are pushing the possibilities of the light-trapping effect to the limit.



### EXTREME WEATHER CONDITIONS

Even in heat, sandstorms and dusty conditions, the module provides stable and durable performance.



### TAILOR-MADE OPTIONS

DAS Energy combines both aesthetics and functionality and therefore offers a wide range of solutions. Size, shape and colour of the modules are customizable. The junction box can be mounted either to the front or the rear side of the module. Our customized solutions are as flexible as your imagination. Sizing to your requirement.



### HIGH RELIABILITY

IEC 61730 / IEC 61215  
 IEC 62804-1 Potential-induced degradation  
 IEC 61701 Salt mist corrosion  
 IEC 62716 Ammonia corrosion  
 EN 13501-5 B<sub>ROOF</sub>(t1)  
 "Flying sparks test"

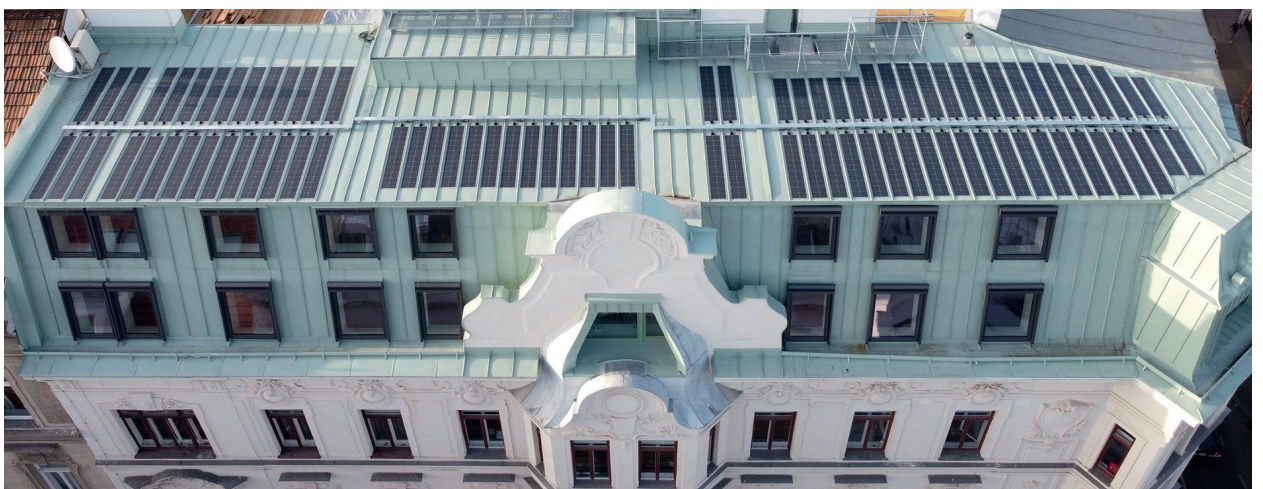
# THE ULTRA LIGHT MODULE

DAS Energy supplies any size of the monocrystalline cells high-performance module: glass-free, frameless, flexible (No thin film!), ultra-lightweight, easy to mount, reliable and long-lasting.

Our universal module bends the rules by combining the advantages of both conventional and thin-film technologies. With this advanced innovation, it creates high energy yield and still stays light and flexible. When it comes to the installation of DAS Energy solar modules, it only takes a fractional amount of time compared to the installation of conventional products. There is no underconstruction needed, therefore the modules can be easily adapted to on-site requirements. No holes need to be drilled into the substructure as our modules can be glued.

DAS Energy modules can also be screwed, riveted, or mounted onto the substructure using magnets or eyelets. The ultra-lightweight modules ensure that they can be mounted even onto roofs or facades with difficult structural or physical conditions.

Our anti-reflective, dirt-resistant and light-catching surface ensures the maximum electrical yield of our modules. By constantly improving the characteristics of our surface structure we are pushing the possibilities of the light-trapping effect to the limit. As a result, our modules are ideal for the installation on roofs and open-air surfaces where reflection is a drawback, for example in the surrounding of airports or big cities.





metal sheet roof / privat



Bitumen Roof / Vöslauer Mineralwate

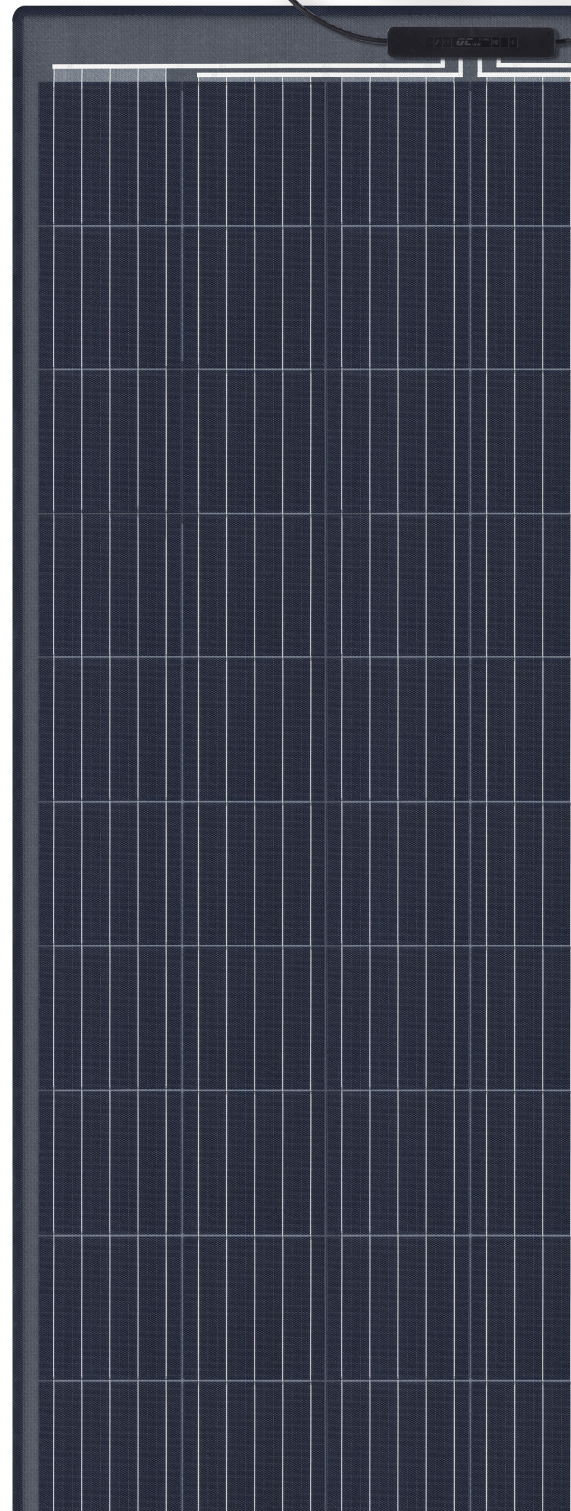
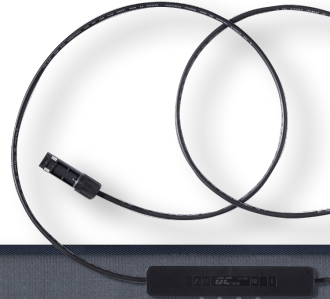


Membrane roof / Berlin



Glass roof / Vienna

3,3  $\frac{\text{kg}}{\text{m}^2}$



# IMAGINE BEING AN ARCH THE

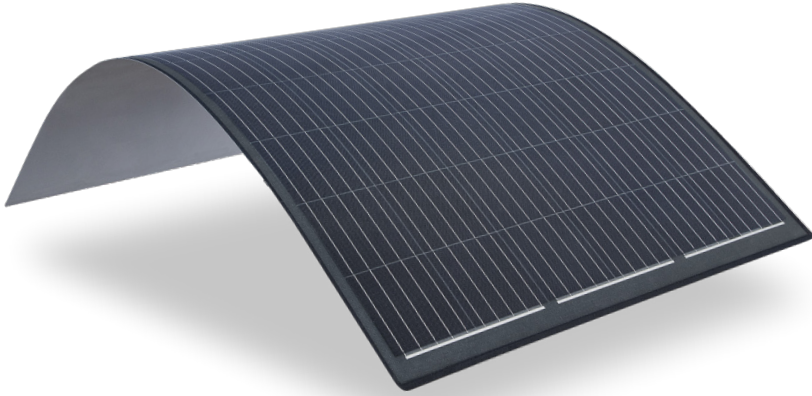


# G ITECT OF FUTURE





# AS FLEXIBLE YOUR



## CUSTOM-BUILT SOLUTIONS



### BUILDING-APPLIED PHOTOVOLTAICS (BAPV)

For existing buildings, the use of building-applied photovoltaics is an ideal opportunity to save on electricity costs and to make an impact on the world's transition to sustainable energy. When it comes to installation, there is no underconstruction needed, therefore the modules can be easily adapted to on-site requirements. No holes need to be drilled into the substructure as our modules can be glued. For existing buildings, this is an important factor when it comes to restoration or expansion. The technology used enables both lightweight and flexible application. Thus, the DAS Energy modules can be integrated into modern architecture, as well as used for new buildings and existing buildings with static limitations. Our solar modules can also be screwed, riveted, or mounted onto the substructure using magnets or eyelets. The flexible and ultra-lightweight modules ensure that they can be mounted even onto roofs or facades with difficult structural or physical conditions. The possibilities of DAS Energy modules have no limits.

# AS IMAGINATION

## WE MEET YOUR EXPECTATIONS

We encourage our patented technology and innovation to meet challenges. DAS Energy combines both aesthetics and functionality, and therefore offers a wide range of solutions. Size, shape and colour of the modules are customizable. The junction box can be mounted either to the front or the rear side of the module. By working closely with our customers,

we are providing the best solutions and fulfill all requirements that are specified. Our core value is to combine the highest standards in advanced technology with unique development by working with leading technical experts in order to achieve the highest customer satisfaction. There is no doubt: Our customized solutions are as flexible as your imagination!

## BUILDING-INTEGRATED PHOTOVOLTAICS (BIPV)

Building-integrated photovoltaics play a major role in the world's transition to sustainable energy. In this promising and growing field, it is our concern to meet the high requirements of architects and the construction industry by providing a wide range of high-quality products, various installation possibilities, customized solutions as well as outstanding customer service. Moreover, the flexible modules easily conform to the substructure with a module weight as low as  $3.3 \text{ kg} / \text{m}^2$ .

The sustainable innovation behind DAS Energy modules sets new standards and guarantees high-end products with extra ordinary performance and a durable life span.



# IMAGINE E WHERE



# ENERGY EVER IT'S NEEDED



## MOBILE & OUTDOOR SOLUTIONS

---

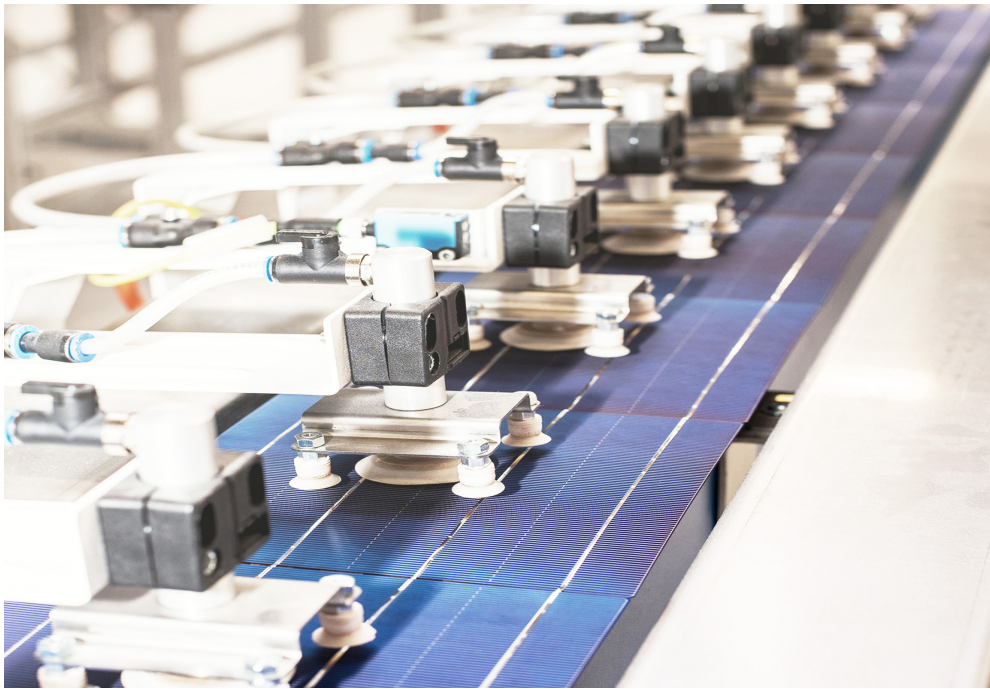
Implementation of solar modules on boats, tents, containers, golf carts and other vehicles can be a tight fit. DAS Energy combining both, aesthetics and functionality: size, shape and colour of the modules can be adapted and integrated into a variety of exciting contours and surfaces.

Especially for the golf carts, DAS Energy has developed a perfect solar solution which can be applied to almost any golf cart on the market. The light, thin and flexible but still solid construction of the solar modul allows you to attach the product to the existing golf cart roof with minimal installation effort.

The DAS Energy solar roof extends the driving range up to 35% and increases the life span of the batteries up to 2 years compared to a regular golf cart. Besides, our solar modules are ideal for container systems of all sizes and can provide up to 70 kWp. This supports DAS Energy's vision of giving people access to electricity all over the world. DAS Energy also provides an elegant solution for boats and yachts.

Our solar modules perfectly performed at salt mist corrosion tests as well as hail impact tests and therefore meets all expectations. For sure, DAS Energy is a perfect choice for a mobile and outdoor solution.

# IMAGINE MA PRO A BETTER WO



# KING FITS AND RUD

STORY READY BUILT.

## SUCCESS FACTORS FOR INVESTORS

The sun generates 8,000 times the earth's annual energy demand and therefore outshines all other energy sources. The world's population is growing annually. Meeting its growing energy needs while also contributing to the world's transition to sustainable energy is one of the greatest challenges of our time.

The use of solar energy can be as flexible as your imagination. It can be applied for mobile and outdoor applications as well as integrated into the materials used for buildings. It can also be used to produce electricity in areas without access to the energy grid. **DAS Energy offers you a tailored turnkey solution for solar energy production.**

## START YOUR OWN PROJECT

Investors receive exclusive access to our patented technology. We will provide you with easy access to solar energy and you can rely on our outstanding longtime experience. As an investor, you will benefit from our innovative spirit and excellent know how. **DAS Energy will provide you with guidance in all fields: from the scratch till the final production.** Our service includes the production license, consulting during the whole period till the production of the first 5 MW, access to our network including high-class experts, technical support during the setup of the production line, theoretical and practical training and much more. By investing in a turnkey factory, we will support you with a "carefree package", so please contact us to start your project.