

THE UNIVERSAL MODULE



ULTRA-LIGHTWEIGHT



FLEXIBILITY



EASILY MOUNTED
WITH A NUMBER OF
ASSEMBLY OPTIONS



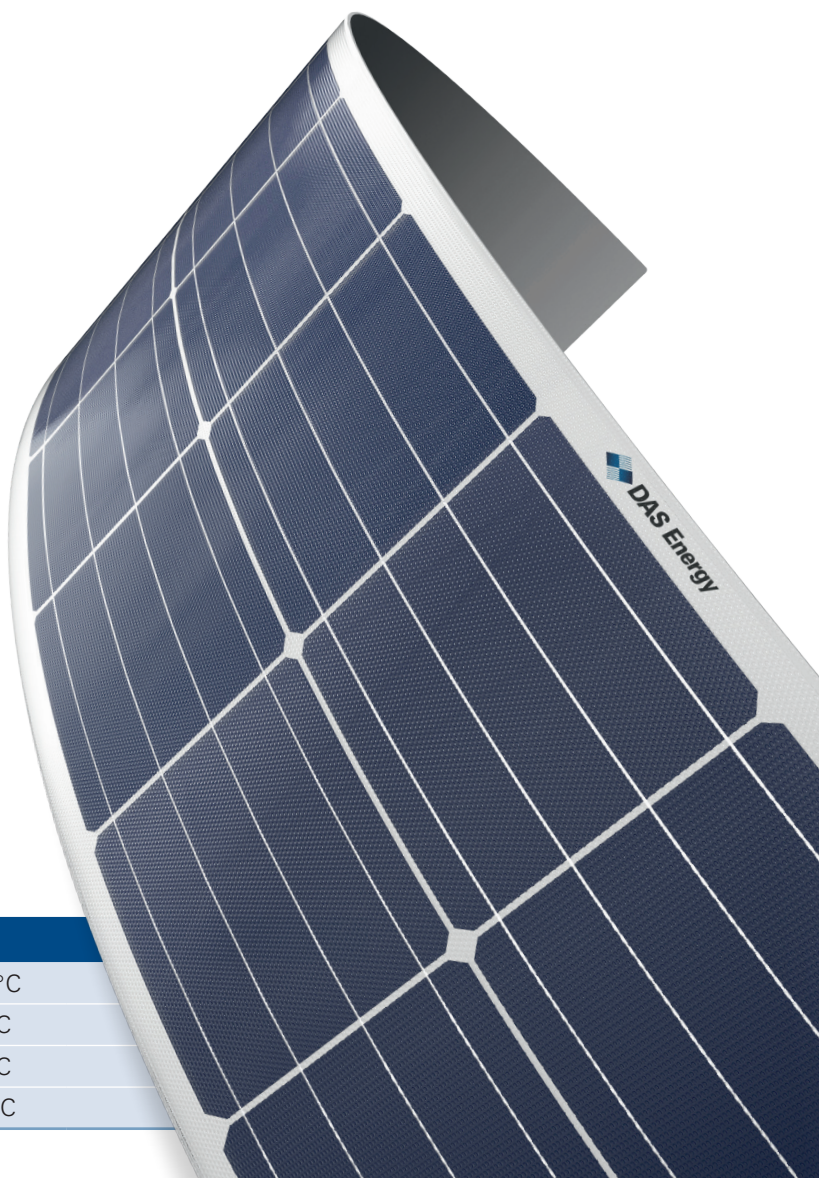
EXTREME WEATHER
CONDITIONS



SPECIAL CUSTOMIZED
SOLUTIONS



HIGHER ENERGY
YIELD



THERMAL CHARACTERISTICS

Operating temperature range	-40°C to +85°C
Temperature coefficient P _{mpp}	-0.393 % / °C
Temperature coefficient V _{oc}	-0.310 % / °C
Temperature coefficient I _{sc}	+0.051 % / °C

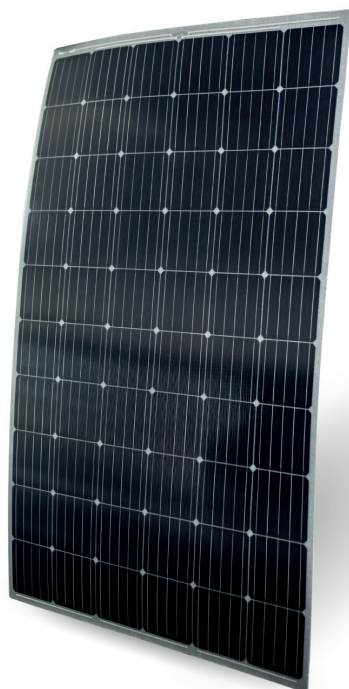
TECHNICAL DATA

Solar cells	5BB monocrystalline solar cells
Maximum system voltage	1000 V
Maximum reverse current	20 A
I _{sc}	9.043 A
I _{mp}	8.6 A
Weight	from 2.5 kg/m ² (typically 3.3 kg/m ²)
Front sheet	Soil-resistant ETFE-Film
Encapsulation	Patented fiberglass-reinforced plastic
Back sheet	High-resistance PET
Junction box	TÜV-certified (IP67/68) with bypass-diodes
Cables	2 x 4 mm ²
Connector	PV4-S

THE UNIVERSAL MODULE

AVAILABLE STANDARD SIZES

Please contact us for any other size or format.



Module length	Order code	Number of cells	12x1M FJB 12x1M	12x2M FJB 12x2M	12x3M FJB 12x3M	12x4M FJB 12x4M	12x5M FJB 12x5M	12x6M FJB 12x6M
			Wp	Voc	Vmp	Wp	Voc	Vmp
2024 mm FJB* or 1975 mm**	12		55 Wp 8.04 Voc 6.40 Vmp	115 Wp 16.08 Voc 13.38 Vmp	170 Wp 24.11 Voc 19.77 Vmp	225 Wp 32.15 Voc 26.17 Vmp	280 Wp 40.19 Voc 32.56 Vmp	340 Wp 47.73 Voc 40.58 Vmp
1868 mm FJB* or 1819 mm**	11		50 Wp 7.37 Voc 5.82 Vmp	105 Wp 14.74 Voc 12.21 Vmp	155 Wp 22.10 Voc 18.03 Vmp	210 Wp 29.47 Voc 24.42 Vmp	260 Wp 36.84 Voc 30.24 Vmp	310 Wp 44.21 Voc 36.05 Vmp
1706 mm FJB* or 1657 mm**	10		45 Wp 6.70 Voc 5.24 Vmp	95 Wp 13.40 Voc 11.05 Vmp	140 Wp 20.10 Voc 16.28 Vmp	190 Wp 26.79 Voc 22.10 Vmp	235 Wp 33.49 Voc 27.33 Vmp	280 Wp 40.19 Voc 32.56 Vmp
1549 mm FJB* or 1500 mm**	9		40 Wp 6.03 Voc 4.66 Vmp	85 Wp 12.06 Voc 9.89 Vmp	125 Wp 18.09 Voc 14.54 Vmp	170 Wp 24.11 Voc 19.77 Vmp	210 Wp 30.14 Voc 24.42 Vmp	250 Wp 36.17 Voc 29.07 Vmp
1389 mm FJB* or 1340 mm**	8		35 Wp 5.36 Voc 4.07 Vmp	75 Wp 10.72 Voc 8.73 Vmp	110 Wp 16.08 Voc 12.80 Vmp	150 Wp 21.43 Voc 17.45 Vmp	185 Wp 26.79 Voc 21.52 Vmp	225 Wp 32.15 Voc 26.17 Vmp
1230 mm FJB* or 1181 mm**	7		30 Wp 4.69 Voc 3.49 Vmp	65 Wp 9.38 Voc 7.56 Vmp	100 Wp 14.07 Voc 11.63 Vmp	130 Wp 18.76 Voc 15.12 Vmp	165 Wp 23.44 Voc 19.19 Vmp	200 Wp 28.13 Voc 23.26 Vmp
1070 mm FJB* or 1021 mm**	6		25 Wp 4.02 Voc 2.91 Vmp	55 Wp 8.04 Voc 6.40 Vmp	85 Wp 12.06 Voc 9.89 Vmp	115 Wp 16.08 Voc 13.38 Vmp	140 Wp 20.10 Voc 16.28 Vmp	170 Wp 24.11 Voc 19.77 Vmp
Number of cells			1	2	3	4	5	6
			204 mm	354 mm	523 mm	673 mm	842 mm	991 mm
			Module width					

*Dimensions front junction box (length) ** Dimensions rear junction box (length)

APPLICATIONS

Building-integrated and building-applied PV (rooftop, facade), special applications

POWER RANGE 25-340 WP

Tolerances*
 ≥ 250 Wp: -0/+10 W
 < 250 Wp: -5/+5 W
 Isc: +/- 10%
 Voc: +/- 10%

* all electrical data at STC
 (1.000 W/m², 25 +/- 2 °C,
 AM 1.5 according to IEC 60904-3)

HIGH RELIABILITY

IEC 61730 | IEC 61215
 IEC 62804-1 Potential-induced degradation
 IEC 61701 Salt mist corrosion
 IEC 62716 Ammonia corrosion
 EN 13501-5 B_{ROOF} (t1) "Flying sparks test"

WARRANTY

10-year product warranty
 40-year linear performance warranty for building-integrated and building-applied installations

SCIENTIFIC PARTNERS AND ASSOCIATIONS



Ferdinand Graf von Zeppelin-Straße 18, 2700 Wiener Neustadt, Austria

Phone / +43 2622 35035 0

E-Mail / office@das-energy.com

Web / www.das-energy.com

