




DAS ENERGY SOLAR ROOF 8x1

 **AESTHETIC PV SOLUTION**
for building integrated photovoltaic


 **ULTRA-LIGHTWEIGHT**
Only 3.3 kg/m²

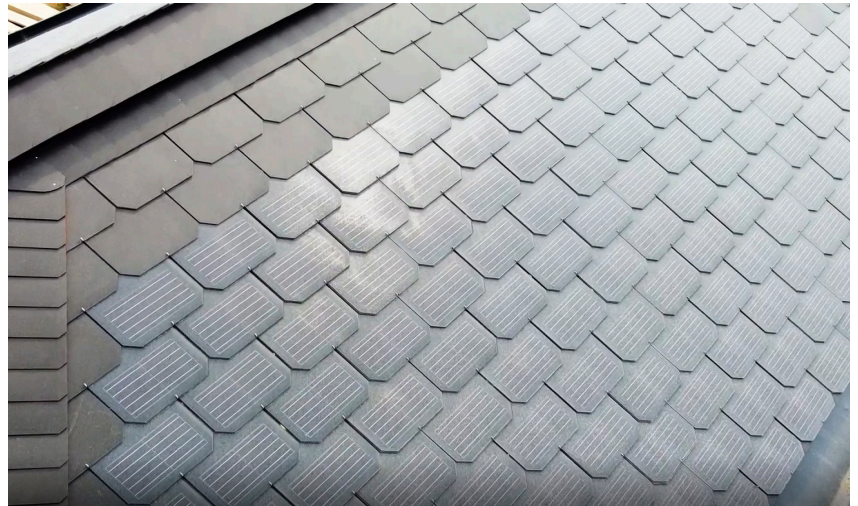
 **TAILOR-MADE OPTIONS AVAILABLE**
Sizing to your requirements
Various colors available

 **PATENTED MULTI-LAYER
CELL ENCAPSULATION**
Maximal microcrack protection
Increased longevity

 **EASY TO INSTALL**
Installed together with the roof
Modules are mounted with
the shingle hooks

 **HIGH EFFICIENCY**
Monocrystalline cells
No thin film!

 **ETFE FRONT SHEET**
Soil-repellent (high self-cleaning effect)
UV & salt resistant
Optimal heat dissipation



THERMAL CHARACTERISTICS

Operating temperature range	-40°C to +85°C
Temperature coefficient P _{mpp}	-0.38 % / °C
Temperature coefficient V _{oc}	-0.36 % / °C
Temperature coefficient I _{sc}	+0.07 % / °C



UNIQUE "LOW DEGRADATION" WARRANTY
Minimum 85 % yield after 40 years



EXTREME WEATHER CONDITIONS
Even in heat, sandstorms and dusty
conditions, the module provides stable
and durable performance

TECHNICAL DATA

Solar cells	5BB monocrystalline solar cells
Maximum system voltage	1000 VDC
Maximum overcurrent protection rating	20 A
I _{sc}	9.3 A
I _{mp}	8.9 A
Weight	2.9 kg/m ²
Front sheet	Soil-repellent ETFE
Encapsulation	Patented fiberglass-reinforced plastic
Back sheet	High-resistance PET
Junction box	TÜV-certified (IP67/68) with bypass diodes
Cables	2 x 4 mm ²
Connector	original PV4-S

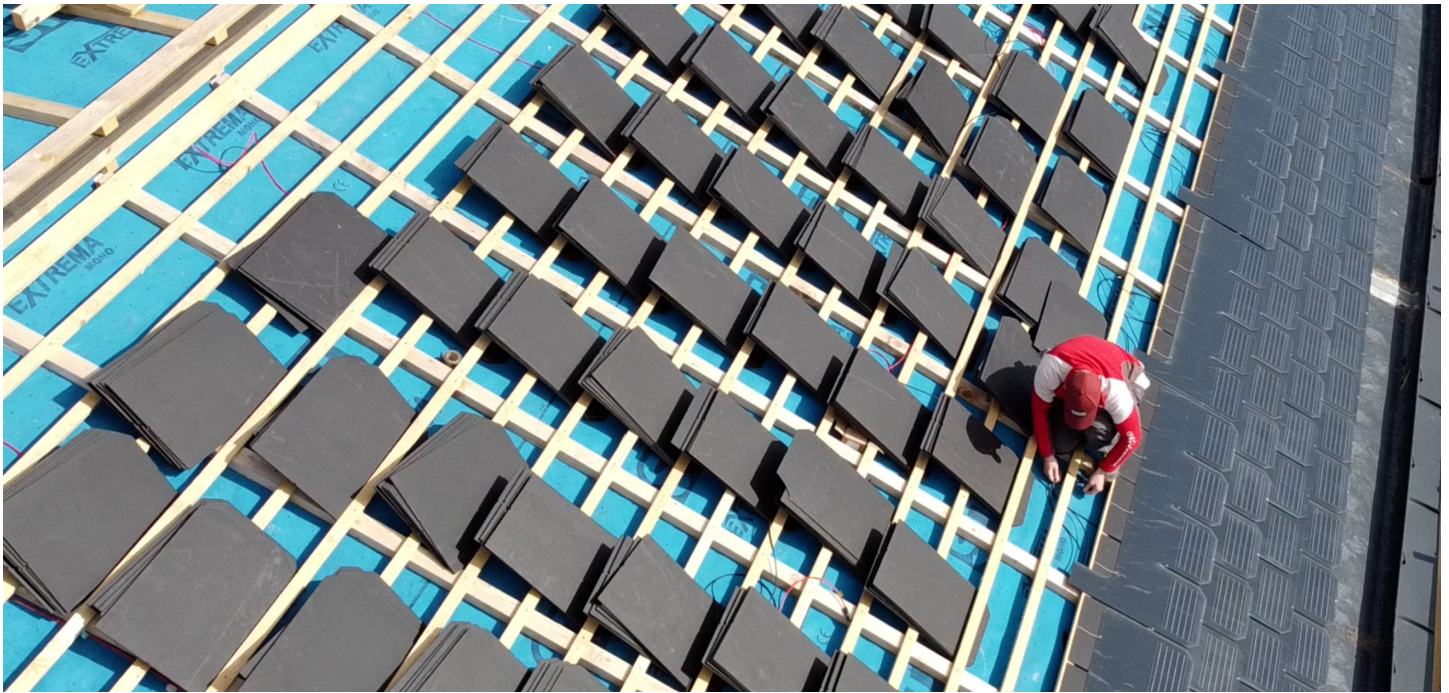
DAS ENERGY SOLAR ROOF MODULE 8x1



8 x 1 M RJB

Name	Power	Solar cells	Module length	Module width	Voc (V)	Vmp (V)	Imp (A)	Isc (A)
8 x 1 M RJB	36 Wp	8	1,630 mm	400 mm	5.5	4.2	8.9	9.4

RJB = rear junction box



Rooftop installation private house

APPLICATIONS

Building-integrated and building-applied PV (rooftop, facade), special applications

POWER RANGE 18 - 36 Wp

Tolerances*
- 5 / + 5 W

Ics: +/- 10 %
Voc: +/- 10 %

* all electrical data at STC
(1.000 W/m², 25 +/- 2 °C,
AM 1.5 according to IEC 60904-3)

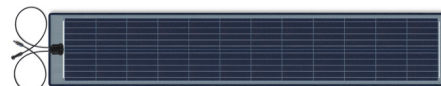
WARRANTY

10-year product warranty
40-year linear performance warranty for building-integrated and building-applied installations

SCIENTIFIC PARTNERS AND ASSOCIATIONS



Phone / +43 2622 35035 0
E-Mail / office@das-energy.com
Web / www.das-energy.com



Ferdinand Graf von Zeppelin-Straße 18
2700 Wiener Neustadt, Austria