




# DAS ENERGY SOLAR ROOF 8x1

 **AESTHETIC PV SOLUTION**  
for building integrated photovoltaic


 **ULTRA-LIGHTWEIGHT**  
Only 3.3 kg/m<sup>2</sup>

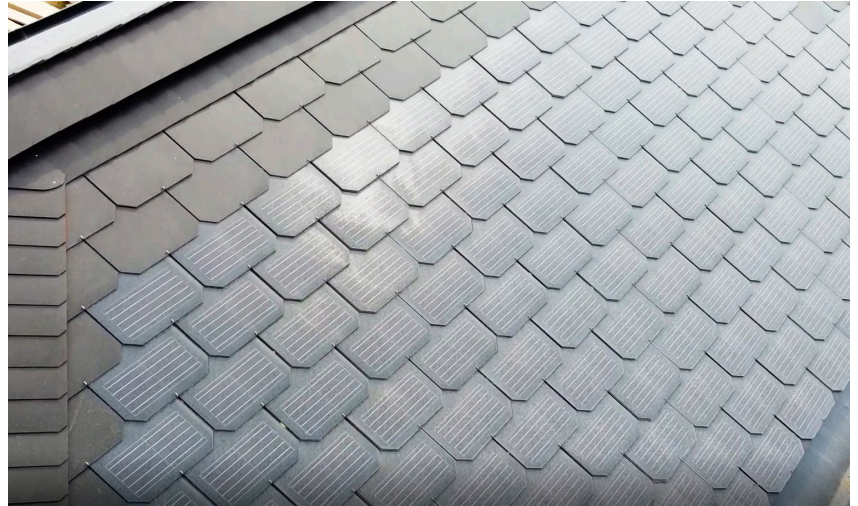
 **TAILOR-MADE OPTIONS AVAILABLE**  
Sizing to your requirements  
Various colors available

 **PATENTED MULTI-LAYER  
CELL ENCAPSULATION**  
Maximal microcrack protection  
Increased longevity

 **EASY TO INSTALL**  
Installed together with the roof  
Modules are mounted with  
the shingle hooks

 **HIGH EFFICIENCY**  
Monocrystalline cells  
No thin film!

 **ETFE FRONT SHEET**  
Soil-repellent (high self-cleaning effect)  
UV & salt resistant  
Optimal heat dissipation



## THERMAL CHARACTERISTICS

Operating temperature range	-40°C to +85°C
Temperature coefficient P <sub>mpp</sub>	-0.38 % / °C
Temperature coefficient V <sub>oc</sub>	-0.36 % / °C
Temperature coefficient I <sub>sc</sub>	+0.07 % / °C



**UNIQUE "LOW DEGRADATION" WARRANTY**  
Minimum 85 % yield after 40 years



**EXTREME WEATHER CONDITIONS**  
Even in heat, sandstorms and dusty  
conditions, the module provides stable  
and durable performance

## TECHNICAL DATA

Solar cells	5BB monocrystalline solar cells
Maximum system voltage	1000 VDC
Maximum overcurrent protection rating	20 A
I <sub>sc</sub>	9.3 A
I <sub>mp</sub>	8.9 A
Weight	2.9 kg/m <sup>2</sup>
Front sheet	Soil-repellent ETFE
Encapsulation	Patented fiberglass-reinforced plastic
Back sheet	High-resistance PET
Junction box	TÜV-certified (IP67/68) with bypass diodes
Cables	2 x 4 mm <sup>2</sup>
Connector	PV4-5

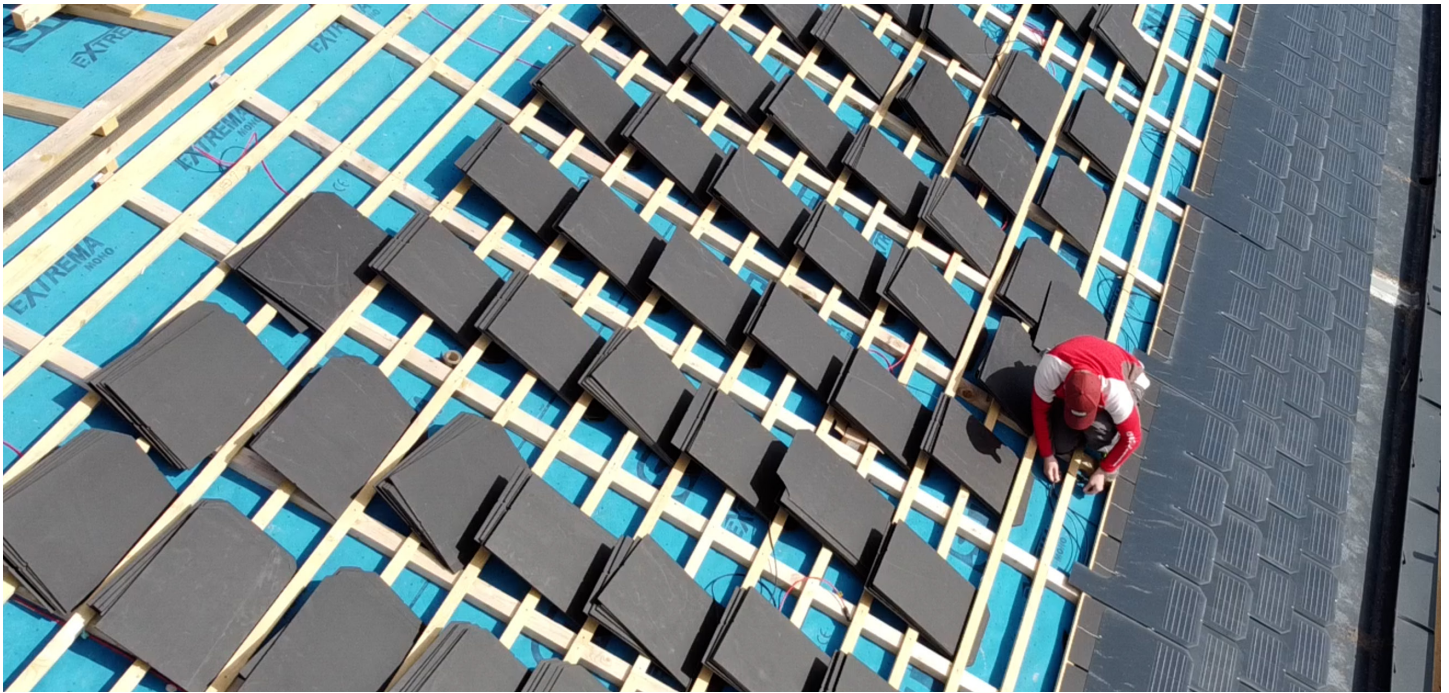
# DAS ENERGY SOLAR ROOF 8x1



## 8 x 1 M RJB

Name	Power	Solar cells	Module length	Module width	Voc (V)	Vmp (V)	Imp (A)	Isc (A)
8 x 1 M RJB	36 Wp	8	1,630 mm	400 mm	5.5	4.2	8.9	9.4

RJB = rear junction box



Rooftop installation private house

### APPLICATIONS

Building-integrated and building-applied PV (rooftop, facade), special applications

### POWER RANGE 18 - 36 Wp

Tolerances\*  
- 5 / + 5 W

Ics: +/- 10 %  
Voc: +/- 10 %

\* all electrical data at STC  
(1.000 W/m<sup>2</sup>, 25 +/- 2 °C,  
AM 1.5 according to IEC 60904-3)

### WARRANTY

10-year product warranty  
40-year linear performance warranty for building-integrated and building-applied installations

#### SCIENTIFIC PARTNERS AND ASSOCIATIONS



Phone / +43 2622 35035 0  
E-Mail / office@das-energy.com  
Web / www.das-energy.com



Ferdinand Graf von Zeppelin-Straße 18  
2700 Wiener Neustadt, Austria