



DAS ENERGY SOLAR ROOF 8x1

 **AESTHETIC PV SOLUTION**
for building integrated photovoltaic

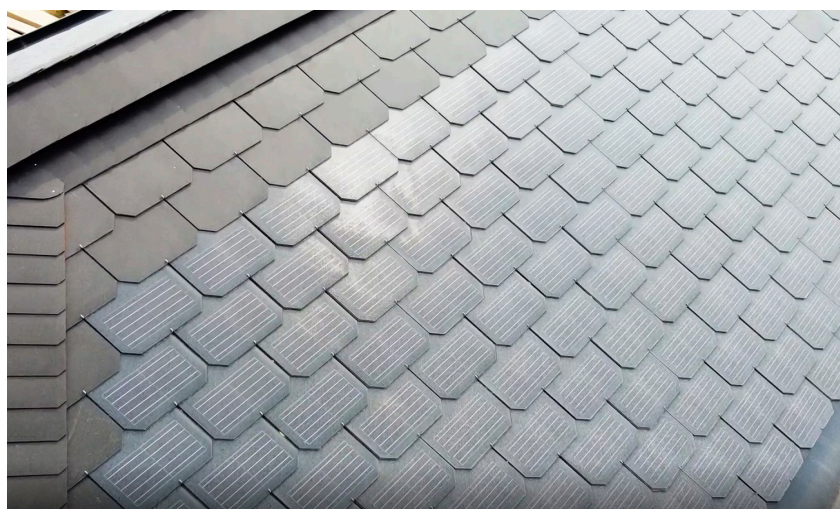
 **TAILOR-MADE OPTIONS AVAILABLE**
Sizing to your requirement
Various colors available


 **PATENTED MULTI-LAYER CELL ENCAPSULATION**
Maximal microcrack protection
Increased longevity

 **EASY TO INSTALL**
No metal subsystem required
No ballast required

 **UNIQUE "LOW DEGRADATION" WARRANTY**
Minimum 85 % yield after 40 years

 **HIGH-EFFICIENCY SILICON CELL**
Monocrystalline cells
No thin film!



 **ETFE FRONT SHEET**
Soil-repellent (high self-cleaning effect)
UV & salt resistant
Optimal heat dissipation

 **EXTREME WEATHER CONDITIONS**
Even in heat, sandstorms and dusty conditions, the module provides stable and durable performance

THERMAL CHARACTERISTICS

Operating temperature range	-40°C to +85°C
Temperature coefficient Pmpp	-0.38 % / °C
Temperature coefficient Voc	-0.36 % / °C
Temperature coefficient Isc	+0.07 % / °C

TECHNICAL DATA

Solar cells	5BB monocrystalline solar cells
Maximum system voltage	1000 VDC
Maximum overcurrent protection rating	20 A
Isc	9.4 A
Imp	8.9 A
Weight	2.9 kg/m ²
Front sheet	Soil-repellent ETFE
Encapsulation	Patented fiberglass-reinforced plastic
Back sheet	High-resistance PET
Junction box	TÜV-certified (IP67/68) with bypass diodes
Cables	2 x 4 mm ²
Connector	PV4-S

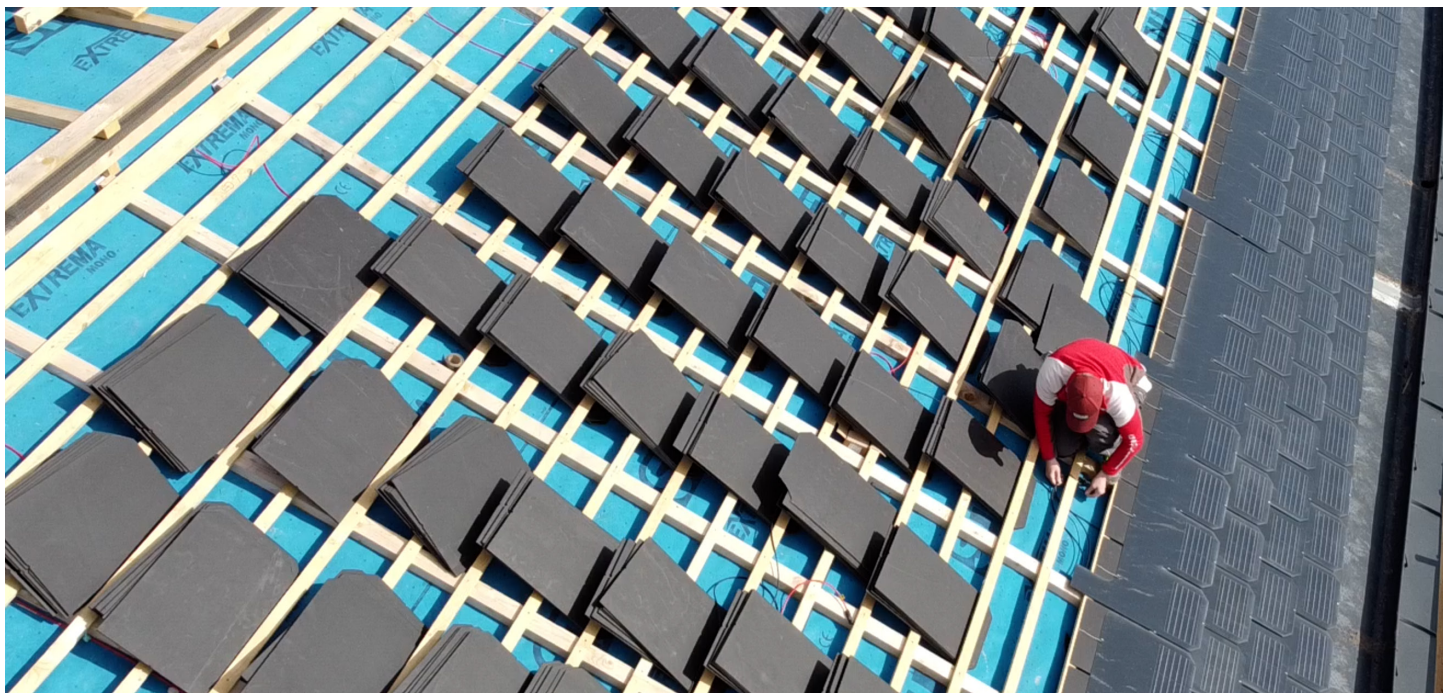
DAS ENERGY SOLAR ROOF 8x1



8 x 1 M RJB

Name	Power	Solar cells	Module length	Module width	Voc (V)	Vmp (V)	Imp (A)	Isc (A)
8 x 1 M RJB	36 Wp	8	1,630 mm	400 mm	5.5	4.2	8.9	9.4

RJB = rear junction box



Rooftop installation private top floor

APPLICATIONS

Building-integrated and building-applied PV (rooftop, facade), special applications

POWER RANGE 20 - 350 Wp

Tolerances*
 ≥ 250 Wp: - 0 / + 10 W
 < 250 Wp: - 5 / + 5 W
 Ics: +/- 10 %
 Voc: +/- 10 %

* all electrical data at STC
 (1.000 W/m², 25 +/- 2 °C,
 AM 1.5 according to IEC 60904-3)

WARRANTY

10-year product warranty
 40-year linear performance warranty for building-integrated and building-applied installations

SCIENTIFIC PARTNERS AND ASSOCIATIONS



Phone / +43 2622 35035 0
 E-Mail / office@das-energy.com
 Web / www.das-energy.com



Ferdinand Graf von Zeppelin-Straße 18
 2700 Wiener Neustadt, Austria